



# AFECO

## HEATING SYSTEMS

- AFECO HEATING SYSTEMS is one of the Leading Manufacturers of-
- **INDUSTRIAL FERROUS & NON-FERROUS HEAT TREATMENT FURNACES**
  - **NON-FERROUS MELTING & HOLDING FURNACES (ALUMINIUM)**
  - **INDUSTRIAL OVENS (HEATING, DRYING, BAKING)**
  - **RAPID QUENCHING MANIPULATORS**

And other Turnkey solutions of Heat Treatment Processes required in manufacturing industries. With a rock solid experience of more than 30 years AFECO has a customer base in INDIA as well as Abroad

Plot No. F-23, Gokul Shirgaon MIDC, Kolhapur,  
Maharashtra. 416234.

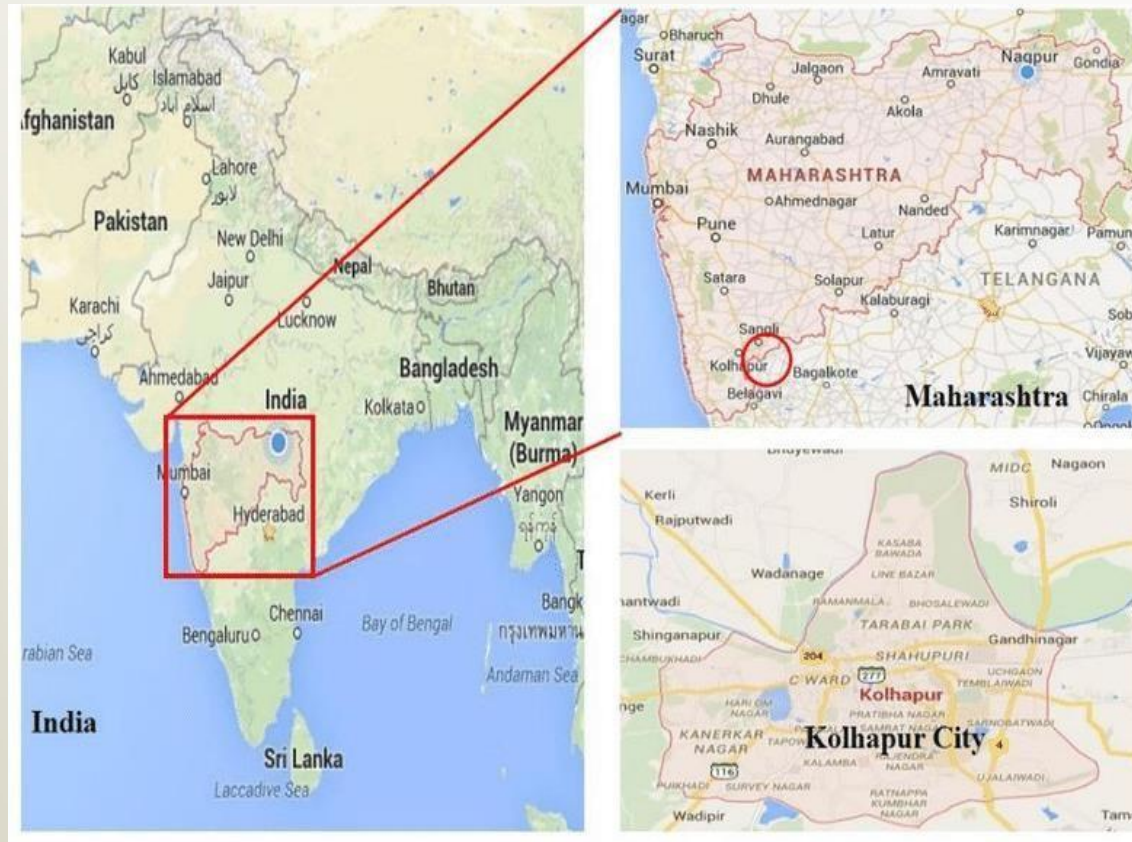
Contact Details - +91-9371634910/909

Email – [sales@afecoheating.com](mailto:sales@afecoheating.com)

[maladkar@afecoheating.com](mailto:maladkar@afecoheating.com)

Website – [www.afecoheating.com](http://www.afecoheating.com)

# AFECO HEATING SYSTEMS LOCATION



AFECO is located strategically at Kolhapur in the state of Maharashtra in India, which is in the western part and at about 400 Km from Mumbai, with Road, Rail & air connectivity.

# AFECO HEATING SYSTEMS – UNIT I CORPORATE OFFICE/WORKSHOP



# AFECO HEATING SYSTEMS – UNIT II

## MANUFACTURING WORKSHOP

Plot No. A-232/2, Kagal Five Star MIDC, Kolhapur,  
Maharashtra. 416236.





# FULLY AUTOMATED HEAT TREATMENT PLANT WITH MANIPULATOR



**STEEL  
HEAT TREATMENT**



**AUTOMATED RAPID QUENCHING MANIPULATOR**

# FACILITIES FOR CONTROL SYSTEM DESIGN (SCADA)



## INTEGRATED MECHANICAL DESIGNING FACILITY

Design facility equipped with –

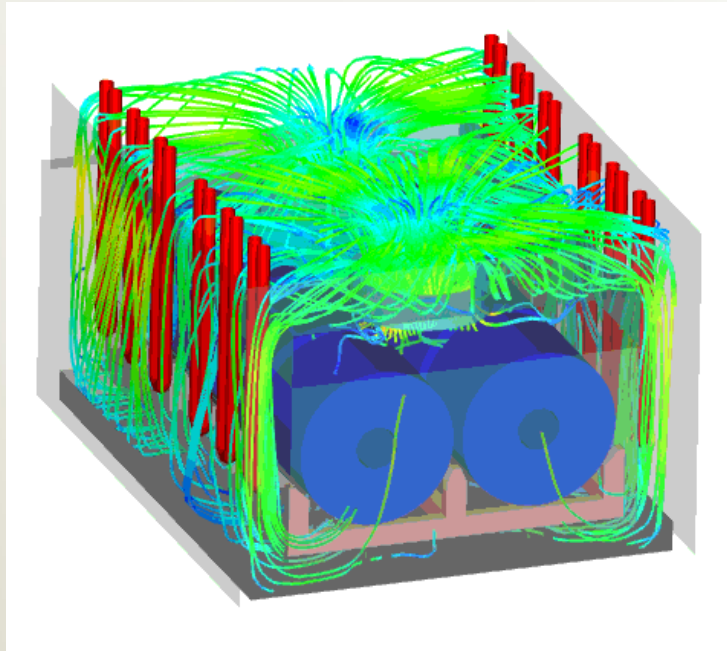
- AutoCAD
- Pro-E
- SOLIDWORKS
- CATIA



## PLC PROGRAM DEVELOPMENT FACILITY

- Delta ISP Soft for Delta Make PLCs
- TIA Portal for Siemens Make PLCs and other automation equipments.

# DESIGNING FACILITIES



## SIMULATION FACILITY

Before actual manufacturing the whole designed system is simulated in ANSYS under the exact same parameters to check and verify the furnace design.



## CONTROL PANEL DESIGNING FACILITY

Total in-house designing of –

- Control Cabinet Box
- Power Circuit
- Control Circuit

A dedicated team of Electrical, Electronics & Instrumentation Engineers appointed for same.



# MANUFACTURING FACILITIES

## WORKSHOP FOR HEAVY FABRICATION



Two manufacturing units with full fledge state of the art machinery required for fabrication.

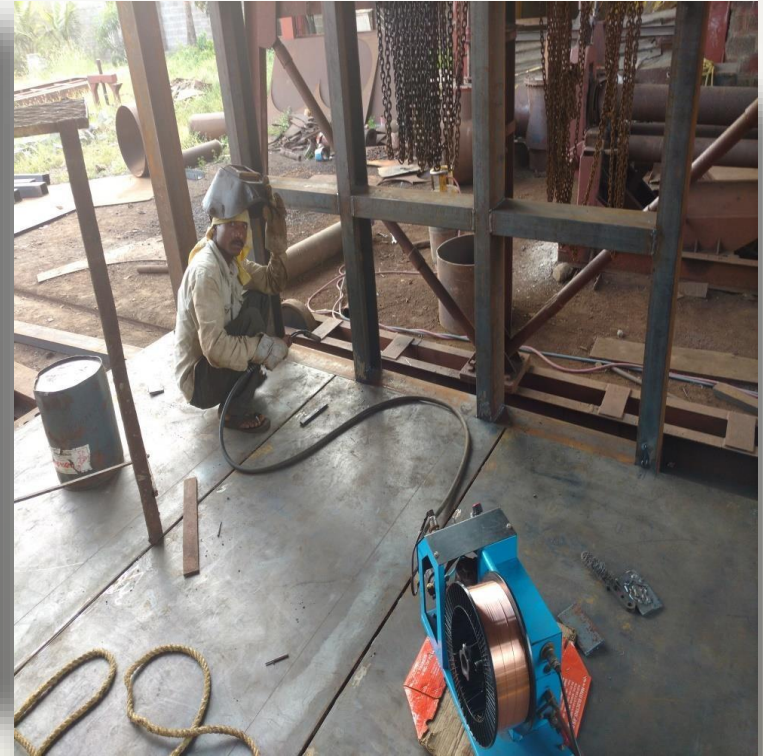


Hydraulic Sheet Bending Facility and Laser Cutting facility.



# MANUFACTURING FACILITIES

## WELDING FACILITY



Manufacturing facilities include Gas Cutting, CO<sub>2</sub> Welding, Arc Welding, Sheet Bending, and other hand tools as required.

# MANUFACTURING FACILITIES

## REFRACTORY AND INSULATION BUILDING FACILITY



For refractory and insulation material AFECO uses FIBROTHAL, FIBROTHERM, UNIFRAX and Vacuum Formed Ceramic Board.



# MANUFACTURING FACILITIES

## HEATING ELEMENT DESIGNING FACILITY



AFECO uses different types of Kanthal heating elements such as –

- Bundle Rod Heating Elements
- Spiral Heating Elements
- Kanthal AF Heating Elements
- Kanthal APM Heating Elements
- Kanthal A1 Heating Elements.

AFECO uses KANTHAL, KARFA Germany, NiCr 80/20 make material for Heating Elements.



# MANUFACTURING FACILITIES

## HEAVY MACHINING FACILITY - OUTSOURCED



Plano Miller For Heavy Machining with table 900 mm x 8000 mm Long.  
Mono Column Admit 1000mm.

# ENERGY EFFICIENT "ELECTRICAL LADLE PRE-HEATER"



↑  
A New Design compared to the  
conventional Gas / Oil fired Ladle  
Preheaters.



↑  
Reduced operational cost up to **75 %**

# AWARD WINNING ALUMINIUM HOLDING FURNACE

## AL-THERMOS ALUMINIUM HOLDING FURNACE



AWARDED AS THE "HIGHEST ENERGY EFFICIENT FURNACE" BY -



**Bureau of  
Energy Efficiency**  
Ministry of Power, Government of India



UNITED NATIONS  
INDUSTRIAL DEVELOPMENT ORGANIZATION



Confederation of Indian Industry



GLOBAL ENVIRONMENT FACILITY  
INVESTING IN OUR PLANET



# TRANSPORTATION FACILITY



AFECO ensures that the furnaces to be dispatched are properly transported with appropriate packaging of the furnace. Also AFECO has trusted transportation partners which makes sure that the equipment reached the customers door within committed time.

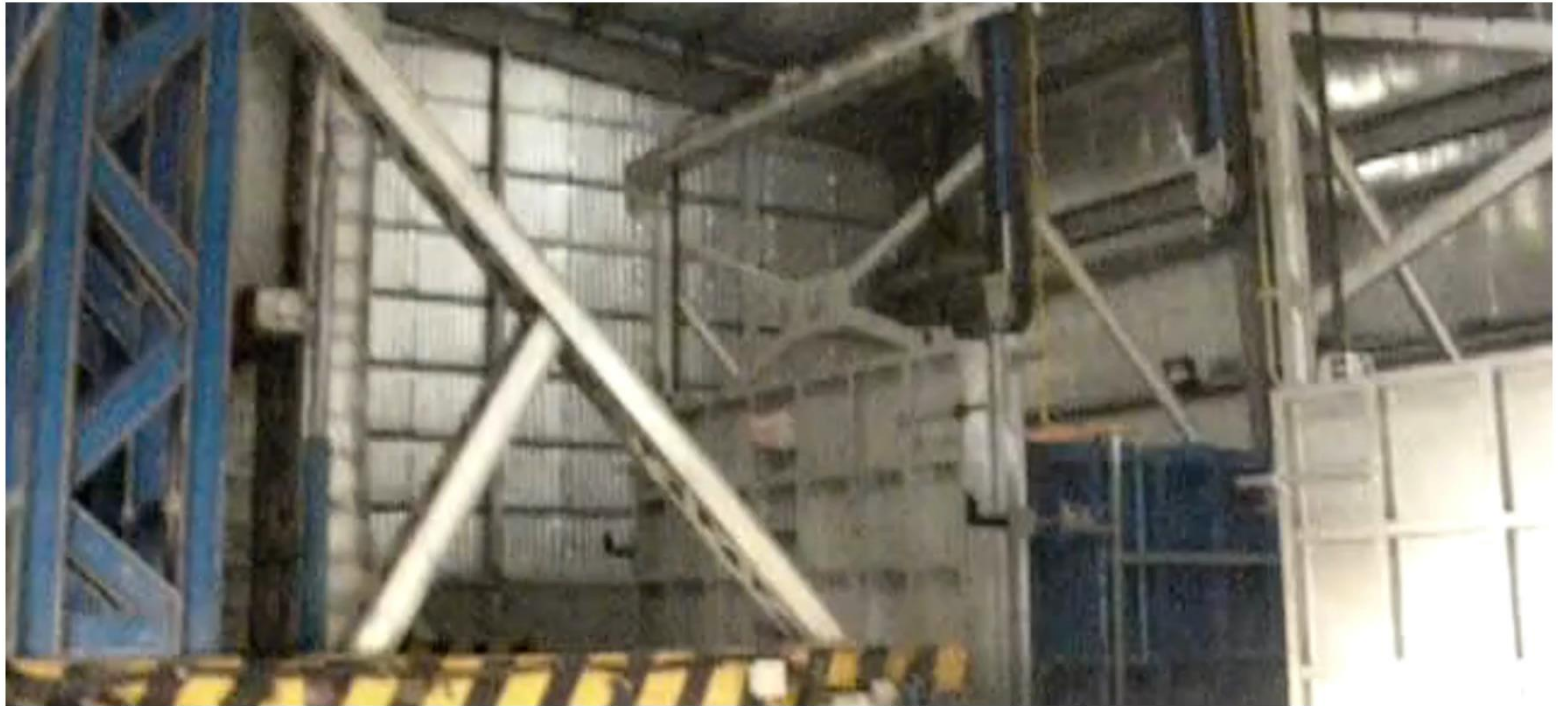


Pit Type  
Furnace  
dispatched  
by AFECO.

# SOME OF OUR ESTEEMED CUSTOMERS



# RAPID QUENCHING MANIPULATOR





# ELECTRICAL LADLE PREHEATER



# ALUMINIUM CHIP RECYCLING VIDEO



# ALUMINIUM CASTING PROCESS AUTOMATION WITH "AL-THERMOS HOLDING FURNACE"

